



# AquaForm DC1

**The first of its kind, this pre-fabricated rough opening enclosure provides:**

- » Reduction in cost due to reduced construction time for dry-in
- » The precision shop fabrication eliminates variables associated with the job site
- » Water penetration eliminated through the window
- » Assurance for building owners

**Proudly made in the USA**





## What is the AquaForm System?

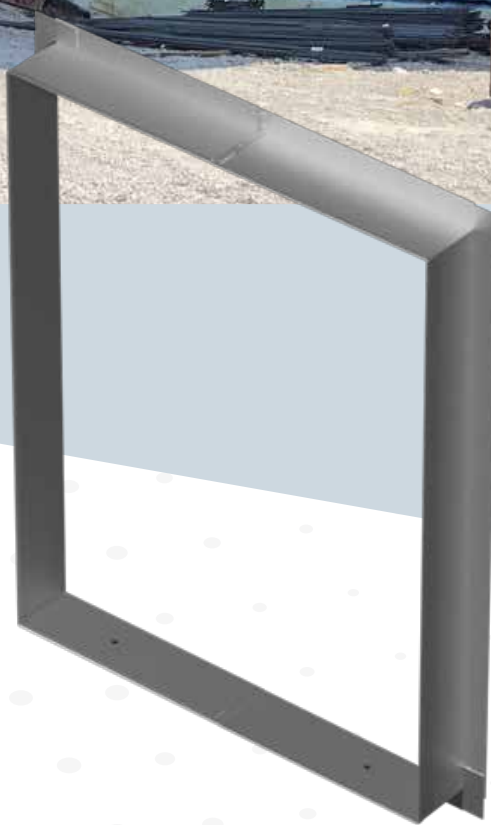
» A pre-fabricated rough opening that reduces construction costs by eliminating the variables associated with on-site fabrication.

» AquaForm is constructed using a single sheet of flashing that has been bent, sealed, and formed to specified predetermined dimensions.

» The uniformed piece of aluminum provides a watertight, airtight system that has been tested and proven to be compatible with most waterproofing, sealant, and air barrier systems that may come in contact with the assembly.

» AquaForm's lightweight and monolithic form allows for faster production time on the job site.

*ABOVE: AquaForm windows being installed in Caldwell Hall at Belmont University. There were approx 1,200 Frames Custom Built for this project.*



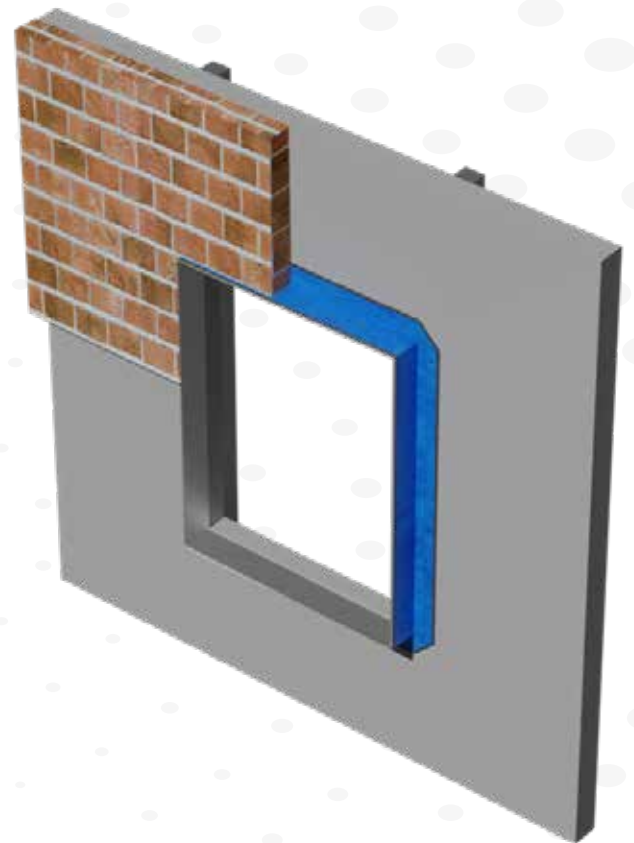


## Characteristics

- » Hemmed edge
- » .050 Aluminum
- » Seamless joints
- » Lightweight
- » Built in baffles to weep water away from rough openings
- » Patent pending # 385.00765

## Benefits of Using AquaForm

- » Monolithic frames with welded seams
- » Pre-fabricated off-site
- » Secondary defense to leaking windows
- » Faster "Dry-In" time for a project
- » Reduces chance of mold and mildew
- » Speeds up construction schedules
- » Reduction in construction costs



**“The ultimate catch-all for leaking windows – it’s virtually impossible for water to enter the building”**



## Have peace of mind in quality, while reducing cost and risk.

### Tested and is compatible with the following sealant and air barrier manufacturers:

- » Carlisle
- » Dow
- » Henry
- » Pecora
- » Prosoco
- » Sika
- » Tremco
- » Vaproshield
- » WR Meadows

### What does AquaForm add?

#### Water and air tight assembly:

- » Hemmed edge
- » Seamless joints
- » Fully Welded

#### High quality craftsmanship:

- » light weight aluminum or stainless steel
- » Consistent and precise shop fabrication

#### Cost reduction:

- » Prevent water intrusion into the building
- » Eliminating extra metal for miscuts during on-site fabrication.
- » Reducing rusting and corrosion of ferrous metal flashing, which can seriously affect mortar in brick and stone joints as well as staining the brick, stone, and other surrounding material.

6335 HWY 76E 37188 Springfield, TN  
(877) 490-4319 | [Quotes@aquaformllc.com](mailto:Quotes@aquaformllc.com)